

**PONY**

Pony Testing International Group



160000343608

Test Report

NO.: GMCUN3LJ93534504

Date: 2018.10.11

Page 1 of 6

Applicant:

BEIJING HUANTENG RUBBER AND PLASTIC PRODUCTS CO.,LTD

The following sample(s) was/were submitted and identified on behalf of the client as:

Sample Name: RUBBER SHEET

Sample Received Date: 2018.09.26

Testing Period: 2018.09.26 To 2018.10.11

Test Requested: RoHS Directive 2011/65/EU & (EU)2015/863 Annex II

Test Methods:

- (1) IEC 62321-5 Edition 1.0:2013 method, Lead Analysis is performed by AAS
- (2) IEC 62321-5 Edition 1.0:2013 method, Cadmium Analysis is performed by AAS
- (3) IEC 62321-4 Edition 1.0:2013 method, Mercury Analysis is performed by ICP-OES
- (4) IEC 62321-7-2 Edition 1.0:2017 method, Hexavalent Chromium Analysis is performed by UV-Vis
- (5) IEC 62321-6 Edition 1.0:2015 method, PBBs and PBDEs Analysis is performed by GC-MS
- (6) IEC 62321-8 Edition 1.0:2017 method, Phthalate Analysis is performed by GC-MS

Testing Results: Please refer to next page(s)

Approved by:

Wang Jun

微信扫一扫，使用小程序



小程序扫一扫，在线验证

Code: vcgrqbtm

PONY 谱尼测试

Pony Testing International Group

Hotline 400-819-5688

www.ponytest.com

Pony Testing International Group Co. Ltd.

Address: 4-5F, Building 1, No.66 Jindai Road, Haidian District, Beijing, China

Testing address: Building 1, No.66 Jindai Road, Haidian District, Beijing, China

PONY-BG186-2-002-2-2017A

Beijing Lab: (010)82618116

Shanghai Lab: (021)64851999

Qingdao Lab: (0532)88706866

Shenzhen Lab: (0755)26050909

Tianjin Lab: (022)27360730

Suzhou Lab: (0512)62997900

Changchun Lab: (0431)85150908

Dalian Lab: (0411)87336618

Haerbin Lab: (0451)88104651

Zhengzhou Lab: (0371)69350670

Xinjiang Lab: (0991)6684186

Shijiazhuang Lab: (0311)85376660

Xian Lab: (029)89608785

Huhehaote Lab: (0471)3450025

Hangzhou Lab: (0571)87219096

Ningbo Lab: (0574)87736499

Wuhan Lab: (027)83997127

Hefei Lab: (0551)63843474

Guangzhou Lab: (020)89224310

Xiamen Lab: (0592)5568048

Chengdu Lab: (028)87702708



扫描二维码
关注谱尼测试



Pony Testing International Group

Test Report

NO.: GMCUN3LJ93534504

Date: 2018.10.11

Page 2 of 6

Test Results (Unit: mg/kg)

Test Item	MDL	Test Result	RoHS Limit
Lead (Pb)	1	12.6	1000
Cadmium (Cd)	1	N.D.	100
Mercury (Hg)	1	N.D.	1000
Hexavalent Chromium (Cr ⁶⁺)	8	N.D.	1000
Sum of PBBs	—	N.D.	1000
Bromobiphenyl	5	N.D.	—
Dibromobiphenyl	5	N.D.	—
Tribromobiphenyl	5	N.D.	—
Tetrabromobiphenyl	5	N.D.	—
Pentabromobiphenyl	5	N.D.	—
Hexabromobiphenyl	5	N.D.	—
Heptabromobiphenyl	5	N.D.	—
Octabromobiphenyl	5	N.D.	—
Nonabromobiphenyl	5	N.D.	—
Decabromobiphenyl	5	N.D.	—
Sum of PBDEs	—	N.D.	1000
Bromodiphenyl ether	5	N.D.	—
Dibromodiphenyl ether	5	N.D.	—
Tribromodiphenyl ether	5	N.D.	—
Tetrabromodiphenyl ether	5	N.D.	—
Pentabromodiphenyl ether	5	N.D.	—
Hexabromodiphenyl ether	5	N.D.	—
Heptabromodiphenyl ether	5	N.D.	—
Octabromodiphenyl ether	5	N.D.	—
Nonabromodiphenyl ether	5	N.D.	—
Decabromodiphenyl ether	5	N.D.	—

PONY 谱尼测试
Pony Testing International Group

Hotline 400-819-5688 www.ponytest.com

Pony Testing International Group Co. Ltd.
Address 4-5F, Building 1, No.66 Jindai Road, Haidian District, Beijing, China
Testing address: Building 1, No.66 Jindai Road, Haidian District, Beijing, China

PONY-BG186-2-002-2-2017A

Beijing Lab: (010)83055000

Shanghai Lab: (021)64851999

Qingdao Lab: (0532)88706866

Shenzhen Lab: (0755)26050909

Tianjin Lab: (022)27360730

Suzhou Lab: (0512)62997900

Changchun Lab: (0431)85150908

Dalian Lab: (0411)87336618

Haerbin Lab: (0451)88104651

Zhengzhou Lab: (0371)69350670

Xinjiang Lab: (0991)6684186

Shijiazhuang Lab: (0311)85376660

Xian Lab: (029)89608785

Huhehaote Lab: (0471)3450025

Hangzhou Lab: (0571)87219096

Ningbo Lab: (0574)87736499

Wuhan Lab: (027)83997127

Hefei Lab: (0551)63843474

Guangzhou Lab: (020)89224310

Xiamen Lab: (0592)5568048

Chengdu Lab: (028)87702708



Test Report

NO.: GMCUN3LJ93534504

Date: 2018.10.11

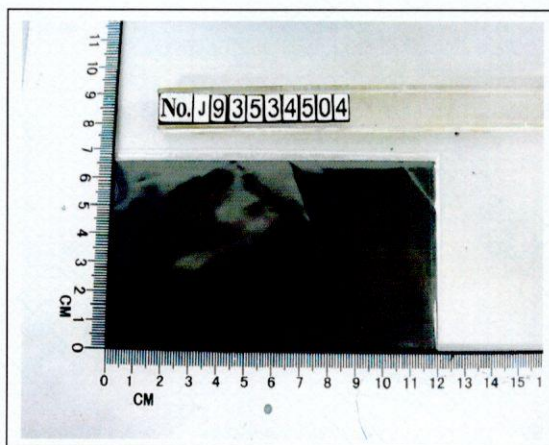
Page 3 of 6

Test Results (Unit: mg/kg)

Test Item	CAS Number	MDL	Test Result	RoHS Limit
DEHP	117-81-7	30	N.D.	1000
DBP	84-74-2	30	N.D.	1000
BBP	85-68-7	30	N.D.	1000
DIBP	84-69-5	30	N.D.	1000

- Note:
- (1) "—" = Does not stipulate
 - (2) N.D. = Not Detected (<MDL)
 - (3) MDL = Method Detection Limit
 - (4) The most allowable limit value reference to RoHS Directive 2011/65/EU & (EU)2015/863 Annex II
 - (5) The testing methods mentioned in this report were designated by the client.

Sample No. & Photo:



Pony authenticate the photo on original report only

The page below is blank

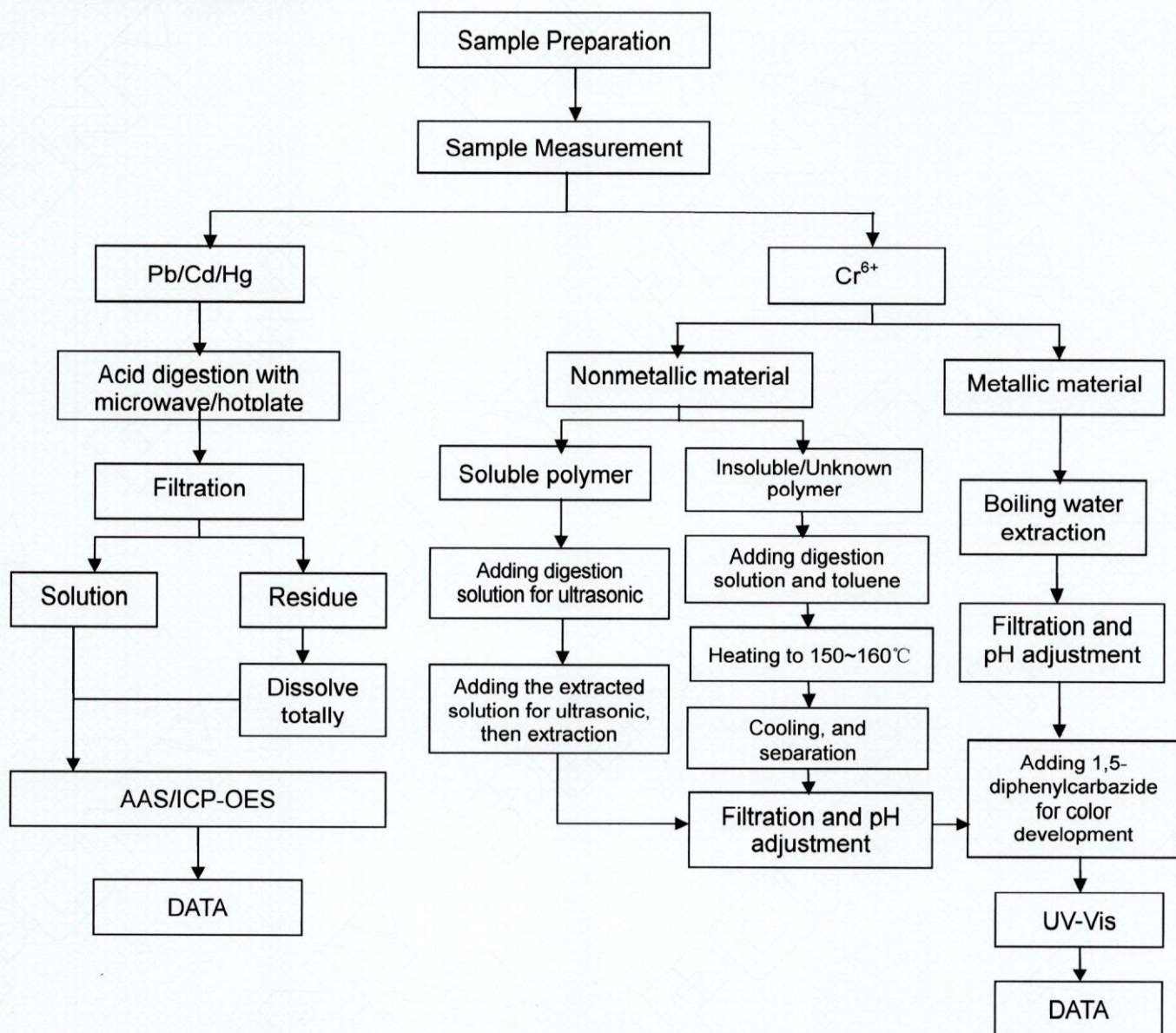

Measurement Flow-chart

Tested by: Liu Jianbo

Checked by: Liu Min

Person in charge of the lab: Yu Jianwei

These Samples Were Dissolved Totally By Pre-conditioning Method According To Below Flow Chart.

 (Cr⁶⁺ Test Method Excluded)




Pony Testing International Group

Test Report

NO.: GMCUN3LJ93534504

Date: 2018.10.11

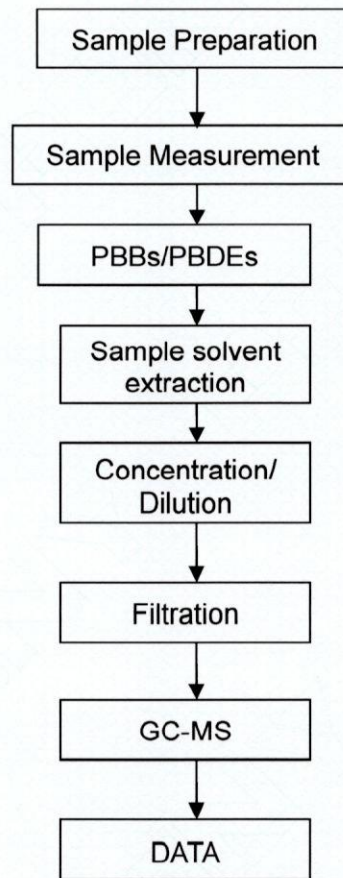
Page 5 of 6

Measurement Flow-chart

Tested by: Liu Shuo

Checked by: Liu Min

Person in charge of the lab: Yu Jianwei


PONY 谱尼测试
 Pony Testing International Group

Hotline 400-819-5688 www.ponytest.com

 Pony Testing International Group Co. Ltd.
 Address: 4-5F, Building 1, No.66 Jindai Road, Haidian District, Beijing, China
 Testing address: Building 1, No.66 Jindai Road, Haidian District, Beijing, China
 PONY-BG186-2-002-2-2017A

Beijing Lab: (010)83055000

Shanghai Lab: (021)64851999

Qingdao Lab: (0532)88706866

Shenzhen Lab: (0755)26050909

Tianjin Lab: (022)27360730

Suzhou Lab: (0512)62997900

Changchun Lab: (0431)85150908

Dalian Lab: (0411)87336618

Haerbin Lab: (0451)88104651

Zhengzhou Lab: (0371)69350670

Xinjiang Lab: (0991)6684186

Shijiazhuang Lab: (0311)85376660

Xian Lab: (029)89608785

Huhehaote Lab: (0471)3450025

Hangzhou Lab: (0571)87219096

Ningbo Lab: (0574)87736499

Wuhan Lab: (027)83997127

Hefei Lab: (0551)63843474

Guangzhou Lab: (020)89224310

Xiamen Lab: (0592)5568048

Chengdu Lab: (028)87702708



Pony Testing International Group

Test Report

NO.: GMCUN3LJ93534504

Date: 2018.10.11

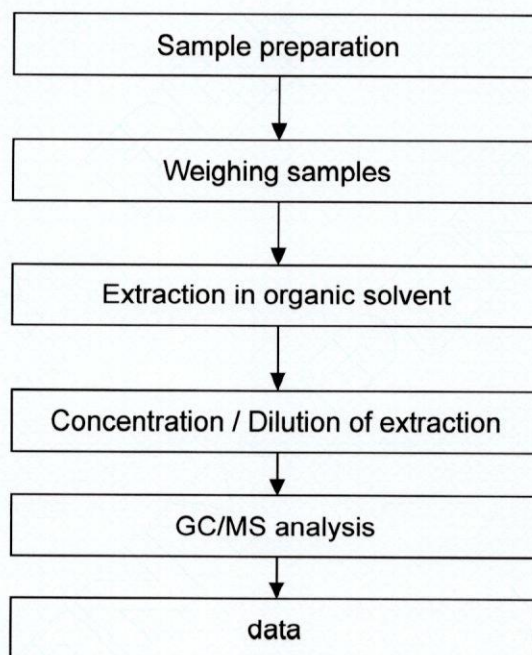
Page 6 of 6

Phthalate Flow Chart

Tested by: Liu Shuo

Checked by: Liu Min

Person in charge of the lab: Yu Jianwei



End of Report



PONY 谱尼测试
Pony Testing International Group

Hotline 400-819-5688 www.ponytest.com

Pony Testing International Group Co. Ltd.

Address: 4-5F, Building 1, No.66 Jindai Road, Haidian District, Beijing, China

Testing address: Building 1, No.66 Jindai Road, Haidian District, Beijing, China

PONY-BG186-2-002-2-2017A

Beijing Lab: (010)83055000

Shanghai Lab: (021)64851999

Qingdao Lab: (0532)88706866

Shenzhen Lab: (0755)26050909

Tianjin Lab: (022)27360730

Suzhou Lab: (0512)62997900

Changchun Lab: (0431)85150908

Dalian Lab: (0411)87336618

Haerbin Lab: (0451)88104651

Zhengzhou Lab: (0371)69350670

Xinjiang Lab: (0991)6684186

Shijiazhuang Lab: (0311)85376660

Xian Lab: (029)89608785

Huhehaote Lab: (0471)3450025

Hangzhou Lab: (0571)87219096

Ningbo Lab: (0574)87736499

Wuhan Lab: (027)83997127

Hefei Lab: (0551)63843474

Guangzhou Lab: (020)89224310

Xiamen Lab: (0592)5568048

Chengdu Lab: (028)87702708